

DRAWING NUMBER
53/37

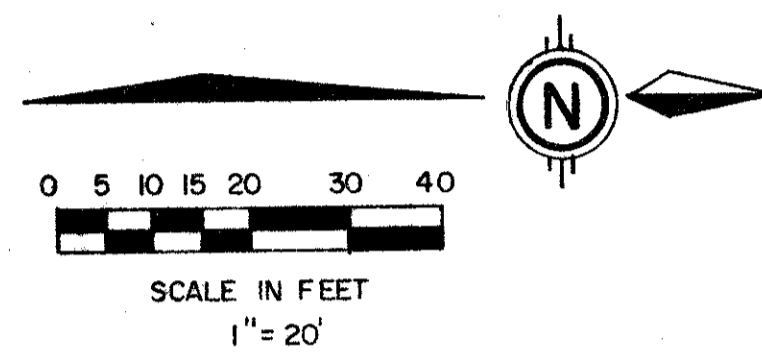
37

RAINBERRY PARK PLAT NO. 6

PART OF RAINBERRY OF WEST BOCA P.U.D.
BEING A REPLAT OF A PORTION OF RAINBERRY PARK PLAT NO. 4 (PB 51, PG. 163).
SITUATE IN SECTION 19, TOWNSHIP 47 SOUTH, RANGE 42 EAST,
PALM BEACH COUNTY, FLORIDA.

SHEET 2 OF 2

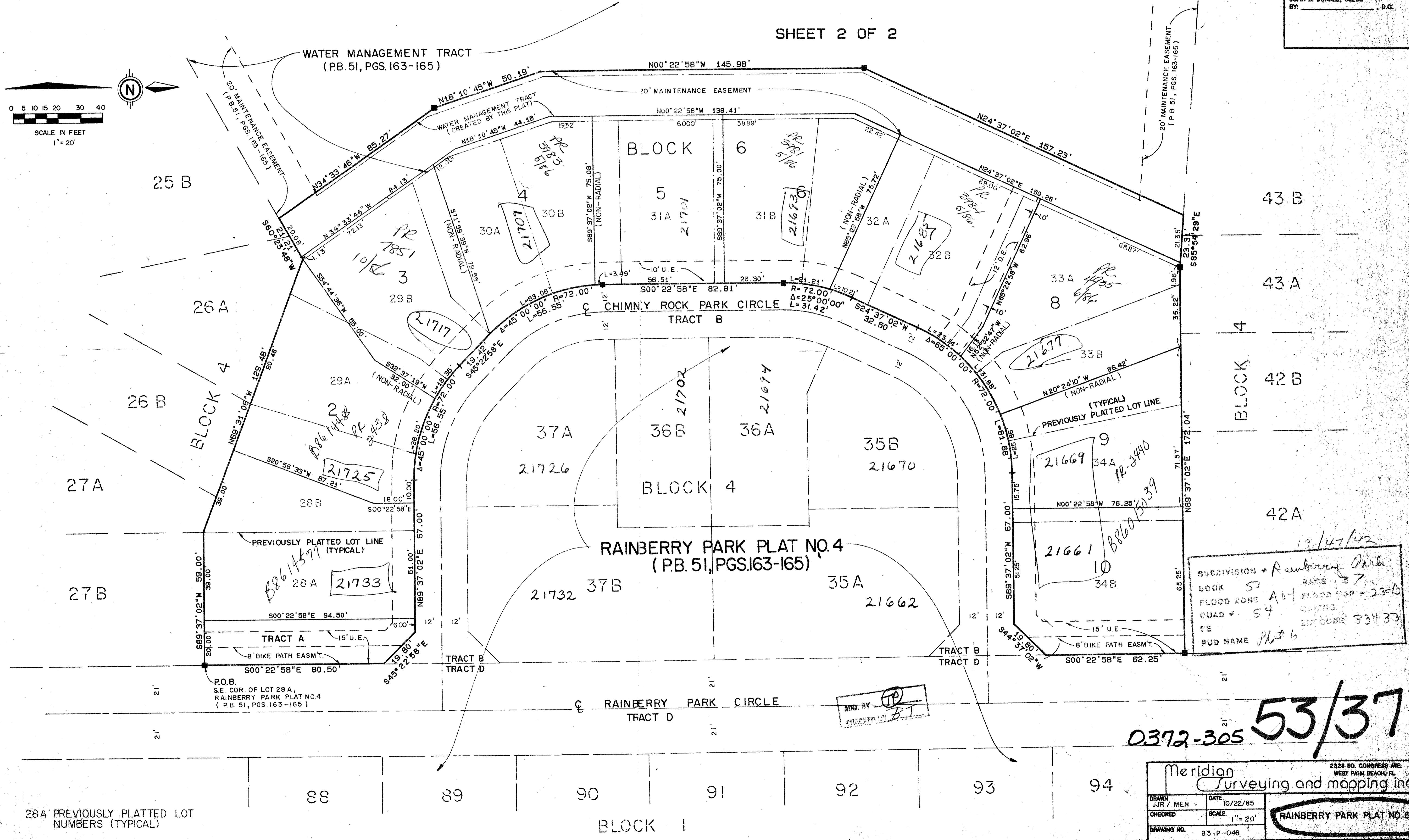
STATE OF FLORIDA
COUNTY OF PALM BEACH
THIS PLAT WAS FILED FOR
RECORD
THIS _____ DAY OF _____
AD, 1986 AND DULY RECORDED
IN PLAT BOOK _____ ON PAGES
_____ AND _____
JOHN B. DUNKLE, CLERK
BY: _____ D.C.



DRAWING NUMBER

DRAWING NUMBER

DRAWING NUMBER



SUBDIVISION + Rainberry Park
BOOK 57 PAGE 37
FLOOD ZONE A-01 FLOOD MAP # 23-B
QUAD # 54
SE
PUD NAME Plat 6

Meridian
Surveying and Mapping Inc.
2328 SO. CONGRESS AVE.
WEST PALM BEACH, FL.

DRAWN J.R. MEN	DATE 10/22/85
CHECKED	SCALE 1" = 20'
DRAWING NO. 83-P-048	RAINBERRY PARK PLAT NO. 6